

The Brooklyn Bee

BROOKLYN QUILTERS GUILD MONTHLY NEWSLETTER

November 2019

Volume 27
Issue 3

NEXT MEETING

November 16

PRESIDENTS' CHALLENGE

page 3

BLOCK OF THE MONTH

page 8

NOVEMBER VENDOR

Easy Piecing

Dear quilting friends,

Isn't this the absolute best weather for snuggling up in your beautiful quilts, drinking warm apple cider, and spending time with your loved ones? The changing colors are so inspiring for new projects. And though I miss the long days of summer sunlight, I no longer have to feel guilty about staying inside all afternoon to quilt!

The quilt show is getting closer and closer, and we are all so excited to see what you have to share. Remember, your quilt tops need to be completed and photographed by the December meeting so that our layout committee can start planning the display. If you plan on displaying a quilt, you will need to fill out a registration form as well as a volunteer form. The planned activities after the November meeting will be all about helping you get your quilt ready for the show. We want as much participation as we can get so that this will be our most spectacular show yet!

And finally, November is the month when we take time to reflect and give thanks. This guild works tirelessly to provide hand-crafted works of art to those in need of comfort, warmth, and love. You all inspire me every day, and I am so thankful to be a part of such a beautiful community. Happy Thanksgiving!

Sincerely,

Andrew Hansen

Co-president



October Charity Quilt Collection

2019-2020 Brooklyn Quilters Guild

OFFICERS

Presidents

Margaret Marcy Emerson

917-374-7718

margaret.marcy@gmail.com

Andrew Hansen

646-623-3063

Andrew.ve.hansen@gmail.com

Vice Presidents

Farrah Lafontant

718-930-2360

farrah.Lafontant@gmail.com

Michael Sengstack

347-291-5084

mgsengstack@msn.com

Secretary

Micki Segel

917-596-6055

mickisegel@gmail.com

Treasurer

Anna Fike

917-716-1503

anna.fike@gmail.com

BQG.treasurer@gmail.com

Membership

Mary Hawley

718-398-3234

bqg.membership@gmail.com

COMMITTEE CHAIRS

Easy as ABC/Kid's Quilts

Jennifer Arzberger

917-685-6712

jennarzberger@optimum.net

Block of the Month

Madi Appell

718-434-0647

NYCfash@aol.com

Kathy Clarke

646-261-1786

kathyquilts@verizon.net

Challenge Quilts

Carol Sullivan

917-495-6315

sulliquilts@aol.com

Karen Mahoney

386-793-1297

KDZMahoney@gmail.com

Comfort Quilts

Dori Dietz

718-853-2153

doridietz1@gmail.com

For Your Information

Debbie Breckenridge

917-439-8272

debbie_breckenridge@yahoo.com

Halo Quilts

Kathy Clarke

646-261-1786

kathyquilts@verizon.net

Hole in the Wall

Carol Lieberman

917-439-9549

clieber@verizon.net

Hospitality

Nancy Russell

845-413-8018.

nrussell11218@gmail.com

Lenni Abel Quilt Fund

Madi Appell

718-434-0647

NYCfash@aol.com

Meeting Raffle

Margaret Walsh

917-871-1433

mmwalsh125@yahoo.com

Heritage Retreats

Carol Lieberman

917-439-9549

clieber@verizon.net

Robin Engelman

917-689-0402

raengelman@gmail.com

Cross Roads Retreats

Martha Musgrove

718-745-6759

marf86@hotmail.com

Trudy Reeves

718-415-2955

trudyreeves@yahoo.com

RMCD House Pillowcases

Robin Engelman

917-689-0402

raengelman@gmail.com

2020 Show Chair

Sylvia Hernandez

347-723-3916

sylvia@brooklynquiltgirl.com

Show and Tell Photography

Barb Christ

718-208-3758

barbchristny@gmail.com

Farrah Lafontant

718-930-2360

farrah.Lafontant@gmail.com

Veteran's Quilts

Carol Sullivan

917-495-6315

sulliquilts@aol.com

Sunday Bee

Madonna Connor

917-216-0741

madonna49@verizon.net

Vendors

Carol Lieberman

917-439-9549

clieber@verizon.net

Victoria Stewart

vickiegs.abc@gmail.com

WEBSITE

Mary Hawley

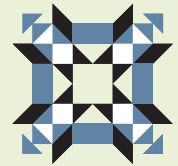
718-398-3234

mhawley.brooklyn@gmail.com

Margaret Marcy Emerson

917-374-7718

margaret.marcy@gmail.com



The Brooklyn Bee

EDITORS

Susan Aronoff

Debbie Breckenridge

Martha McDonald

BEAT REPORTERS

AREA QUILT SHOWS

Martha Musgrove

BLOCK OF THE MONTH

Madi Appell, Kathy Clarke
& Margaret Marcy Emerson

MEET THE QUILTER

Margaret Pross

SEW KNOW

Marcie Brenner

TIPS N' TOOLS

Alice Braziller

COPY EDITORS

Lyn Hill

Mara Lurie

Something to share?
The deadline for submissions
for the December 2019 issue
of *The Brooklyn Bee* is 9 a.m.,
Monday, November 18, 2019.

Please email them to:
texasgcd@hotmail.com.

Join Us at Our Monthly Meetings

GUILD MEETINGS

Usually third Saturday of the month, except July and August.

NEXT MEETING: NOVEMBER 16, 2019

Holy Name of Jesus Church, Shepherd's Hall

245 Prospect Park West (entrance to Shepherd's Hall in back,
off the parking lot).

Business Meeting: 9:45 a.m. Members welcome.

General Meeting: 11:00 a.m. Members: free; guest fee: \$5.

Transportation:

Bus: B68 to last stop at Prospect Park West.

From Park Slope: B67 and B69, to Prospect Park West & 20th St.

From Red Hook: B61 via 9th St. to Prospect Park West.

Subway: F train to 15th Street/Prospect Park.

Parking available.

SUNDAY BEES

Second and fourth Sundays of the month, 10 a.m. – 4 p.m. Bring
your sewing machine and lunch and spend the day.

Featuring Scrap Workshops led by Donna Rae.

Marien-Heim Senior Center

4520 Fourth Avenue at 46th Street, Sunset Park, Brooklyn.

For more info, call Madonna Connor at 718-748-6512.

GET YOUR QUILTS READY FOR THE SHOW

Let's all take some time to get our quilts ready for the show! We will have round robin demonstrations from our members on binding, attaching hanging sleeves, labels, photographing your quilt top, filling out the show submission form, and preparing for drop off. You can attend all the demonstrations, or just the ones you need. Join us immediately following the meeting and learn what you need to get you and your "Quilt Show Ready."

SHOW DEADLINE

Just a reminder that your show quilt or quilts are due at the December meeting. They don't need to be completely finished, but they do need to be ready to be photographed and measured.



2020 PRESIDENTS' QUILT CHALLENGE

Margaret Marcy Emerson and Andrew Hansen,
BQG Co-Presidents

Our mini quilt challenge for the 2020 quilt show is inspired by the following quote.

*"Try to be a rainbow in someone's cloud."
Maya Angelou*

For those of you who can't pick a favorite color, this is your chance to use them all! While we have intentionally left the prompt open to interpretation, we want all of the quilts to feel like they're part of the same collection so please incorporate 6 to 7 colors of the rainbow into your quilt. Otherwise, please be creative and have fun with this challenge.

36" x 36" quilt

Six to seven colors of the rainbow must be included in some way

Quilt pattern of your choice

Quilt must have sleeve, label, and name attached

Due at January's Guild meeting

A FEW OF OUR FAVORITE THINGS...

Here are several Guild members' responses to the question: What is your favorite thing about the Guild's quilt show?

"Seeing everyone's work up close and awesome!"
~ Barbara Christ

"Seeing all of our amazing, varied quilts in one place at one time." ~ Micki Segel

"The good lighting and display space... especially enjoyed revisiting the show on the video." ~ Anna Foss

"My absolute favorite thing about the Guild show is the wide variety of quilts that Guild members create — the colors, the sizes, the patterns — are so different, and the craftsmanship is often spectacular." ~ Dori Dietz Blitz

"My favorite thing about the show is getting to know members outside of the Guild setting. This adds a friendly touch to the time we spend every month with each other. It allows for more get-to-know time, and to learn more personal things." ~ Shelley Gershick

"My favorite aspect of the Guild quilt show is the opportunity to mingle with the larger community of quilting devotees. As a white-glove volunteer, I mix with the viewers, sometimes showing the backs of quilts to them, at times answering questions, and always listening to their comments. I enjoy this opportunity to see how different quilting techniques and styles are received by admirers and become aware of many interesting points of view. Experiencing viewers' enthusiasm firsthand is always very motivating!" ~ Michele Kucker

"It's an opportunity to show that treasured quilt it took so long to make. It brings a sense of camaraderie between fellow quilters, through discussion of the quilts they are making for the show. All quilt shows need quite a number of members working harmoniously to get to the goal — a wonderful successful show." ~ Gladys Watson

"I like to see all the different styles that our Guild members have. Maybe there could be some articles about the 'back story' to some of the quilts." ~ Ruth Marchese

Meet the Quilter: Jennifer Pineda

4



How long have you been a member?

I have been a member since June of 2018.

How did you find out about the Brooklyn Quilters Guild?

I googled quilt guilds and came across the Brooklyn Quilt Guild and noticed that the guild was having a quilt show. So I attended the show and went to the next month's meeting, right after May 2018.

How and when did you get interested in quilting?

I come from a family of garment sewing workers and remember visiting my mom at work and hearing all the sewing machines going. When I was pregnant with my first child I picked up sewing again and made various items such as cloth diapers, crib sheets, curtains, pillows etc. Afterwards I was looking for another challenge and decided to take a Patchwork and Quilting Basics class from Gotham Quilts in April 2017. Since then I have taken 2 other classes and have been hooked ever since.

Describe how your quilting has evolved and what are your current projects and goals for the future?

Since I am new to quilting, it is still evolving. My first full quilt, "The Rebel Quilt," to me seems really busy since I had no idea of colors and how they go together. I still have trouble with it but it definitely seems better.

What is the most memorable quilt-related experience you would like to share?

My most recent class was the Starburst quilt by Keaton Quilts. I took the class at Gotham Quilts and was



amazed how I was able to complete the quilt top in one day. It was a great experience and I can't wait to take another quilting class.

What is your professional background?

This June I will be completing my 17th year of teaching Physical Education in NYC.

How do the Brooklyn Quilters Guild and any other quilt groups you belong to support and/or influence your quilting life?

I enjoy going to the meetings; show-and-tells are great for getting the mojo back, which then motivates me to go home and finish any projects that are not completed.

~ Margaret Pross

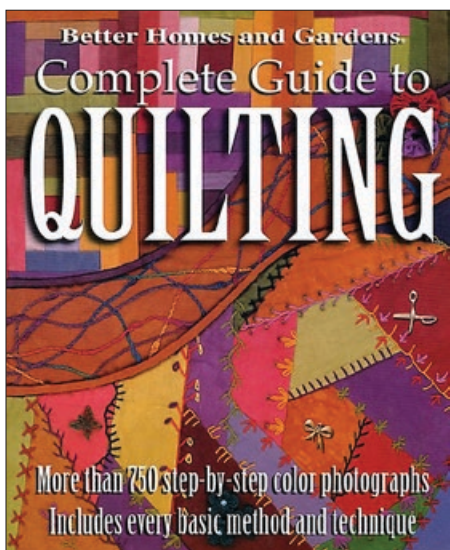


BOOK REVIEW

A Handy Reference Book

Better Homes and Gardens Complete Guide to Quilting
Paperback, 300+ pages, \$19.95
Houghton Mifflin Harcourt Publishing Company, 2002

HAVE YOU EVER ASKED YOURSELF THE question, "What size machine needle should I use for a flannel piecing project?" or "When should I use 100% cotton batting vs. cotton/polyester batting?" Of course, you can turn on your computer and use Google to try to find these answers, or you can keep a quilting reference book like the *Better Homes and Gardens Complete Guide to Quilting* handy to look up these, and hundreds of other answers.



The Better Homes and Gardens Complete Guide to Quilting is divided into 13 sections including topics such as "Planning Pieced Blocks" and "Binding and Finishing." It covers both machine and hand techniques for piecing, applique and quilting, and so much more. Each section has a detailed table of contents, and the index at the back of the book is comprehensive, making it easy to find the information needed for your current project. The book includes more than 750 step-by-step photographs to enhance the explanations provided.

One of the things I like about this book is that it has more than a dozen "Quick Reference Charts" listing things such as diagonal measurements of different sizes of squares and how to reduce / enlarge the size of a block. Often the charts accompany how-to photos of a particular technique, such as cutting equilateral triangles, as shown in this photo.

Another thing I like about this book is the way that the step-by-step instructions for the various techniques are illustrated, making it easy to understand the placement of rulers, needles, etc. For me, these photos / illustrations can be easier to follow than some of the online, how-to videos that sometimes require re-winding / re-watching a few times.

There are, of course, other excellent quilting reference books, but many of them are out of print and hard to find even from used-book sellers. So if you want to add a quilting reference book to your library, *the Better Homes and Gardens Complete Guide to Quilting* is a good choice.

~Debbie Breckenridge

CUTTING 60° EQUILATERAL TRIANGLES—STRIP METHOD



1. Square up the fabric (see page 5-5 for instructions).
2. Cut the fabric in strips as wide as the desired finished height of the triangle, plus 1/4" for seam allowances. For example, to make a finished equilateral triangle that is 3" high, cut a 3 3/4"-wide fabric strip.

3. Align a ruler's 60° line with the long, lower edge of the strip and cut.
4. Rotate the ruler so the opposing 60° line is aligned with the same long, lower edge of the strip and cut.




QUICK REFERENCE CHART

YARDAGE ESTIMATOR: 60° EQUILATERAL TRIANGLES FROM STRIPS

Use this chart to determine the number of 60° equilateral triangles that can be cut from various yardages.

Cut fabric strips as wide as the desired height of the finished triangle, plus 1/4".

Yardage figures include 1/4" seam allowances and are based on 42"-long strips.

HEIGHT OF TRIANGLE		YARDAGE (44/45"-wide fabric)							
Finished	Cut Strip Width	1/4	1/2	3/4	1	1 1/4	1 1/2	1 3/4	2
1"	1 1/4"	180	360	540	720	900	1,080	1,296	1,476
1 1/2"	2 1/4"	120	240	360	480	600	720	840	960
2"	2 3/4"	66	132	198	286	352	418	484	572
2 1/2"	3 1/4"	36	90	144	198	234	288	342	396
3"	3 3/4"	32	64	112	144	192	224	256	304
3 1/2"	4 1/4"	28	56	84	112	140	168	196	224
4"	4 3/4"	12	36	60	84	108	132	156	180

Member Exhibit: Uncommon Threads

6

Eight members of the guild are showing contemporary quilts at the Charles P. Rogers showroom at 213 East 59th St. in Manhattan. The show was co-sponsored by Charles P. Rogers, a well-know bed manufacturer, and *House Beautiful* magazine. Interior designer Brad Ford also participated in the event.

In addition to the various quilts, there's also a video featuring Susan Byrnes in her studio along with Shari Werner and Madi Appell. They demonstrate cutting and design techniques and talk about the process of creating improvisational, contemporary quilts.



Margaret Walsh's quilt is called *Boxes, Mostly Green*. It measures 20 inches wide x 23 inches high.



New York Jazz by Madi Appell is a tryptych. It is 7 feet wide.



This piece by Shari Werner measures 39 inches wide by 47 inches.

The eight guild members who are featured in the show are Madi Appell, Susan Byrnes, Joyce Crupi, Kirsten Fisher, Martha McDonald, Ellen Piccolo, Margaret Walsh, and Shari Werner. The show runs through November 28. Here is the video from the opening:

<https://www.youtube.com/watch?v=wfRvU7R1Sgg&feature=youtu.be>

And here's the *House Beautiful* video:

<https://www.housebeautiful.com/design-inspiration/a29252366/un-common-threads-modern-quilting-video/>

Retreat News

CONNECTICUT RETREATS

Mark your calendars and oil your sewing machines. Here's the schedule of upcoming retreats in Southbury, CT. For more information, and to reserve your place, contact Carol Lieberman at clieber@verizon.net or Robin Engelman at raengelman@gmail.com.

2020
Friday, April 24 – Sunday, April 26, with Thursday, April 23 as the extra day.
Friday, July 24 – Sunday, July 26, with Thursday, July 23 as the extra day.
Friday, October 30 – Sunday, November 1, with Thursday, October 29 as the extra day.

QUILTING CAMP AT CROSS ROADS

2019-2020 RETREATS

November 11-15, 2019: This will be our first mid-week retreat. Check-in will be at 2 p.m. on Monday, November 11 (Veterans Day); check-out will be after breakfast on Friday, November 15 (the great hall may be available for sewing until 12 noon on Friday but the rooms must be vacated by 9:30 a.m.). The cost will be \$269 per person for a shared room and \$309 for single occupancy, including four nights and 11 meals. A reduced rate will be available for three nights and nine meals.

January 5-9, 2020: A mid-week retreat. Check-in will be 4 p.m. on Sunday, January 5; check-out will be at 2 p.m. on Thursday, January 9. The cost will be \$269 per person for a shared room and \$309 for single occupancy, including four nights and 11 meals. A reduced rate will be available for three nights and nine meals.

February 26-March 1, 2020: A four-night weekend retreat. Check-in will be at 4 p.m. on Wednesday, February 26; check-out will be at 2 p.m. on Sunday, March 1. The cost will be \$321 per person for a shared room and \$361 for single occupancy, including four nights and 11 meals. The rate for three nights and nine meals will be \$263 per

person for a shared room and \$303 for single occupancy. A great time to finish off those show quilts (or start another for 2022)!

June 3-7, 2020: A four-night weekend retreat. Check-in will be at 4 p.m. on Wednesday, June 3; check-out will be at 2 p.m. on Sunday, June 7. The cost will be \$321 per person for a shared room and \$361 for single occupancy, including four nights and 11 meals. The rate for three nights and nine meals will be \$263 per person for a shared room and \$303 for single occupancy.

NOTE: A deposit of \$125 for each retreat will be required to reserve a place. Checks should be made out to Martha Musgrove and mailed to her at 637 90th Street, Brooklyn, NY 11228. Please email to let Martha know your check is in the mail. Additionally, we will be at the October and November Guild meetings and will accept deposit checks made out to Martha Musgrove. Preference will be given to those sharing a room.

For more information, contact Trudy Reeves at trudyreeves@yahoo.com, 718-415-2955, or Martha Musgrove at marf86@hotmail.com, 718-745-6759.



NOVEMBER 2019 BOM

LEAF BLOCK

As we experience the beauty of fall weather we think of the leaves turning colors. We look forward to seeing your leaf blocks in an array of exciting colors. ~Madi Appell and Kathy Clarke, Co-chairs

Cutting:

WHITE BACKGROUND:

- (1) 4 1/2" white square.
- (2) 5" white squares.

FALL COLORS:

- (2) 5" squares.
- (3) 4 1/2" squares.

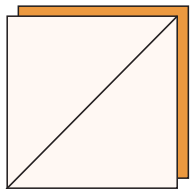
STEM CUT:

- (1) 5" white square.
- (1) 1 1/2" x 6 1/2" green rectangle.

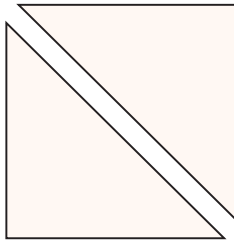
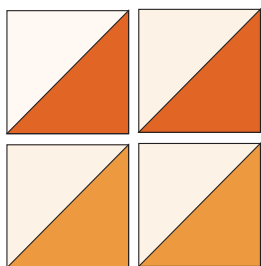
Directions:

STEP 1:

Make (4) half square triangles (HST), using (2) 5" fall-colored squares and (2) 5" white squares. Place the white squares and fall color squares right sides together. Draw a line corner to corner on the back of the white squares. Sew a scant 1/4" along each side of the line. Cut apart on drawn line. Press seams toward color.



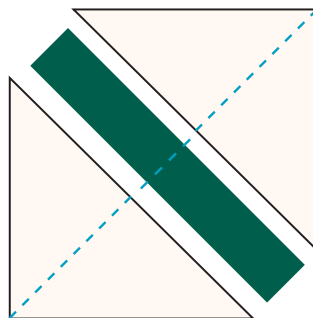
Trim each HST square to 4 1/2". You will now have four HST blocks.



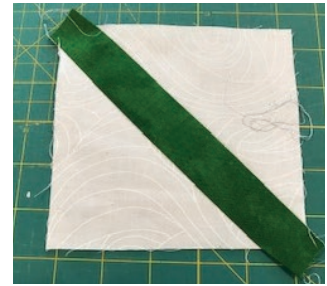
STEP 2: For the stem, take the 5" white square and cut it in half across the diagonal.



STEP 3: Fold each white half triangle corner to corner and finger-press to determine center point. Repeat with the stem piece, folding horizontally in half and finger-pressing.



STEP 4: Sew each white half triangle to the stem rectangle, matching the finger-pressed marks as shown. Trim to 4 1/2" square.



Trim stem square down to a 4 1/2" square

STEP 5: Arrange the fall-colored squares together as desired.



STEP 6: Sew into (3) rows. Then sew rows together to complete the block as shown below.



Final block measures 12 1/2" x 12 1/2".

Upcoming Quilt and Textile Shows, November 2019

COMPILED BY MARTHA MUSGROVE

Brownstone Quilters Guild "Celebration of Quilts," Nov. 8-9, Allendale, NJ. Quilts, vendors, raffle. At Northern Highlands Regional High School, 298 Hillside Ave. Admission: \$10. Info: brownstonequilters.com/quilt-show.

Exhibition of Quilts, Nov. 8-9, Lebanon, PA. Annual show presented by Lebanon Quilters Guild with many quilts, demonstrations, silent auction, raffle, make-and-take project area and more. At Lebanon Expo Center & Fairgrounds, 80 Rocherty Road, Lebanon, PA. Directions at lebexpo.com. Hours: 10-6 both days; admission \$10. Info: lebanonquiltersguild.com; facebook.com/LebanonQuiltGuildShow.

Uncommon Threads, a show by eight Guild members, is currently on view at the Charles P. Rogers showroom, 213 East 59th St., in Manhattan. It runs through **Nov. 28**. Artists are: Madeleine Appell, Susan Byrnes, Joyce Crupi, Kirsten Fisher, Martha McDonald, Ellen Piccolo, Margaret Walsh, and Shari Werner.

Quilt Works at The Manor, Nov. 9, Yonkers, NY. Free quilt show presented by Friends of Philipse Manor Hall. At 29 Warburton Ave., Yonkers, NY 10701. Features a gallery and a show and tell by master quilter Diane Schneck, and hands-on activities for families. Hours: 12-4 p.m. A show opening event will be held on Oct. 7 from 5:30-7:30 p.m. Walking distance from the Metro-North Yonkers station; also a parking garage next door. Info: call (914) 965-4027. <https://www.friendsofphilipsemanorhall.org>.

AT THE NEW MOMA

The Museum of Modern Art, 11 West 53rd St., Manhattan. Admission: \$25 adults; \$18 seniors 65+; students \$14; children 16 and younger free. Hours: 10 a.m.-5:30 p.m. seven days a week. Info: moma.org

Taking a Thread for a Walk, Floor 3, 3 North: The Philip Johnson galleries. The emergence of modern art challenged the widespread marginalization of weaving as "women's work." Textiles became newly visible as a creative discipline, interwoven with architecture, drawing, industrial design, and sculpture. This exhibition takes a thread for a walk among ancient textile traditions, early-20th-century design reform movements, and industrial materials and production methods. Featuring adventurous combinations of natural and synthetic fibers and spatially dynamic pieces that mark the emergence of a more sculptural approach to textile art beginning in the 1960s, this show highlights the fluid expressivity of the medium.

9



The block of the month at the October meeting provided a bountiful harvest of apples and pumpkins. There were so many blocks that they were divided between two lucky winners, Maureen Galli and Shelley Gershick. Congratulations to both!

Sew Know:

Having Fun with Quilting: Playing with Precuts

BY MARCIE BRENNER, MCSE

10

PRECUTS HAVE BEEN around for some time now. Books and patterns have been written to support them and they have become a big part of the quilt world. Just look at the Missouri Star Quilt Company — they have six glossy issues each year that feature precuts and their weekly tutorials also focus on them. There are online merchants whose main businesses are 2½-inch strips. Quilters have come to love precuts; they get a variety of coordinated fabrics ready to use, no hunting for fabrics that play nicely together, no buying more yardage than you need.

The standard precuts are 2½-inch strips, 2½-inch, 5-inch and 10-inch squares, fat eighths (9 by 21 inches), and fat quarters (18 by 21 inches). Each company has different names for these precuts.

Before starting a project, measure the precut to ensure that it is sized correctly; I have found some to be plus or minus the stated measurement. Some companies pink their edges to prevent unraveling and if you trim it away the

fabric will no longer be the correct size. When I work with imperfect precuts, I align the edges with a correctly cut piece and then stitch the edge that doesn't match, using the correct fabric as a guide. That way I know my quarter inch is good, my piecing will be consistent, and my joining to the next grouping will align. Alternate your sewing direction to prevent bowing when stitching strips together along the longer edge to form strata. The strips are cut from the crosswise grain of the fabric giving them more stretch.



It is best to press strata on a seam roll so you can flatten the seam without disturbing the direction of previously pressed areas. I press my seams open for longarming.

If you can't find a precut in the size you need, you can cut your own from a larger one. A fat quarter will make two 10-inch squares, twelve 5-inch squares, and three-and-a-half full size 2½-inch strips. A 10-inch square will make four 5-inch squares and they match! To make figuring out how much fabric you need easier, Robert Kaufman has provided a free app called Quilting Calculators, which is available at your app store. Just put "quilting" in the search and it will come up. ❖



***A note to a question raised at the October meeting: We were discussing the size of quilts as the hanging length could become a problem due to the height of the frames used at our show. There were many different answers to the maximum length of the accepted show quilts and this is due to the variations in the size of beds. The standards for the top of a mattress have remained the same: twin, 39 inches by 75 inches; full/double, 54 inches by 75 inches; queen, 60 inches by 80 inches; and king, 80 inches by 80 inches. What has changed is the drop, the measurement from the top of

the mattress to where you want it to end. With some mattresses coming in at 18" inches thick, quilts have become much larger than before and that doesn't take into account the decision to cover the pillows or use shams. These are things you need to consider when planning a quilt and also picking a quilt for the show. I've seen patterns for king-sized quilts as large as 110 x 110 inches.***

At the November Meeting our workshop will be on finishing quilts, so come ready with your questions.

MEMBER PAGES JUST FOR YOU!

Have you logged into the member section of our website? It's full of helpful information for you. There you can find the Bee newsletter archive, the BOM directions, a member directory, retreat info, show information, current Guild challenges and rules, show and tell archives, board meeting minutes, and more. Plus, there is a page with quick links to tutorials that show how to sew on bindings, add hanging sleeves, and other helpful info.

When logging in use your full email address (the one on file with the Guild) and this password: BQG1993 (you can always change the password after entering). If you have any trouble logging in, send an email to:

brooklynquiltswebmaster@gmail.com

Website: Quiltbrooklyn.org



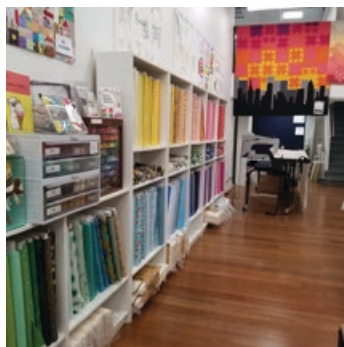
BLOOM
Quilt Retreat
& Fabric Store
COME AND SEW IN
THE CATSKILLS

Bloom
Fabric, Art and Retreat
724 Main St.
Margaretville, NY 12455
845-586-6000



bloomquilts.store
bloom@catskill.net
Bloom: Fabric, Art, & Retreat
[bloomquilts724](https://www.facebook.com/bloomquilts724)

11



GOTHAM QUILTS

40 W 37th St

Get rewarded for shopping

Our **rewards program** has been a big hit. Come in to get your punch card & start saving today!

New Classes

Go to gothamquilts.com/classes to see our full range of classes. What do you want to learn next?

BERNINA⁺

Gotham Quilts
40 W 37th St
New York, NY 10018
212-220-3958
gothamquilts.com

Mon-Sat: 11am-6pm
Sun: Closed
Late night Thursdays,
open 'till 7!

BERNINA sewing machines

We sell and service **BERNINA sewing machines**. Come into the store to test drive the new 570QE!

Minutes of the Executive Board Brooklyn Quilters Guild — October 19, 2019



12

Attendees

Margaret Marcy Emerson, Andrew Hansen, Anna Fike, Michael Sengstack, Farrah Lafontant, Micki Segel, Mary Hawley.
Additional Attendees: Sylvia Hernandez, Susan Sato.
The meeting was called to order.

Reading and Approval of September Minutes

Micki to make corrections of minutes and send final document for publication on our website.

Treasurer's Report

Necessary steps have been taken to identify Anna Fike as the "designated secretary" of the guild for the bank to recognize her authority to make decisions regarding banking for the guild.

Because the guild has been collecting dues, our income has exceeded expenses for the past 2 months. Anna has been designating 15% of all dues payments as savings for our show. She asks for approval to transfer the 15% to the show fund all at one time. The board agrees. Anna also reports that the guild financial report has been posted incorrectly in the Bee for the past 2 months. Going forward she will write a statement for the Bee, explaining the error and the financial report will be sent as a PDF rather than as an excel document. The Board unanimously approves the financial report. Please refer to income and expense report provided at the end of these minutes.

Programming

The programming chairs reviewed the results of the programming survey with the board. The programming chairs found that the results of the survey inspired them to think about ways to address a variety of issues and interests that were highlighted by the survey. The board agrees that a summary of the findings will be shared in the Bee and that the full report will be made available on the website.

Programming for the November meeting will focus on helping members prepare for the show. ("Quilt Show Ready"). Workshops will be offered on binding, labeling, making a quilt sleeve, photographing your quilt, completing the show application, etc.

There will be a Holiday Party in December. Tentative plans for speakers in January and April.

Board Liability Insurance

The board is looking into insurance. We are in the process of completing an application to NIF for board insurance that was obtained by Jody. Board members are exploring other insurers for price comparison.

Technology Subcommittee

Report was tabled until the November meeting.

New Committee for Members Helping Members

Report tabled until the November meeting.

Show Update

The outstanding issue concerning the contract with Industry City has been resolved. The contract will be signed by Jody and Margaret.

There will not be a second Raffle Quilt for the show. The guild will not be including a sewing machine as part of the raffle since we have not received a donation. There was discussion as to whether the Guild should purchase a machine to raffle and the board made the

decision not to. We have received a donation of a sewing machine case that will be stuffed with sewing supplies and raffled along with our raffle quilt.

Susan Sato has lined up 8 vendors for the show. There is room for 2 additional vendors. Gotham Quilts will not be vending, but they have asked to be a sponsor of the show. Clarification is needed as to what it means to be a sponsor. This question will be taken up by the Show Committee.

Quilt drop-off for the show will be at the Saturday Guild meeting prior to the show. An additional drop-off will be arranged at Merry Handfinger's home.

Scholarship Fund

The guild has a \$97.00 scholarship fund for membership. The Board agrees that a policy or process needs to be created to help determine who is eligible for these funds before issuing any honorary memberships.

New Business

No new business identified.

The meeting was adjourned.

Submitted by Micki Segel, Secretary

Guild Income-Expense Reports by Categories 9/19/19 thru 10/16/19

Bank Accounts

Checking	\$9390
Checks awaiting deposit	0
Savings Quilt Shows	\$25,457
Lenni Abel Fund	\$2,726
Scholarship Fund 5101	\$97

Cash Accounts

Cash	0
Petty Cash	\$118

Credit Card Accounts

Credit Card	0
-------------	---

TOTAL Bank Accounts **\$37,788**

Income

Bee Ads	\$200
Bee Mail Fee	\$180
Hospitality	\$54
Interest on Lenni Abel and Reserve Fund	\$0
Meeting Raffle	\$357
Member Dues	\$4,940
Pole Rental	\$400
Special Raffle	\$290

TOTAL INCOME **\$6421**

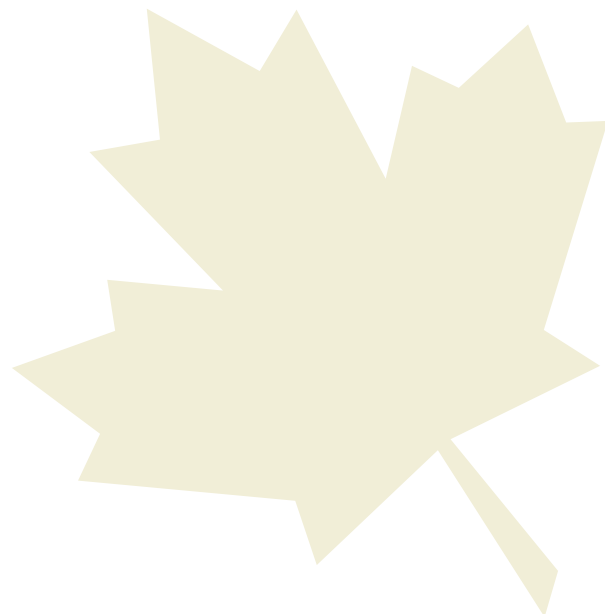
Treasurer's report continued on the next page

Expenses

Charitable Work	
Halo Quilts	\$28
TOTAL Charitable Work	\$28
Hospitality	\$60
Telephone	\$56
TOTAL EXPENSES	\$144
OVERALL TOTALL	\$6277

Treasurer's Correction

In September there was an error in copying the financial reports into the Bee. The correct financials were reported to the board and are available on the BQG website.



PINCUSHION CORNER

Cute Puff Pincushion

Supplies needed:

- Two pieces of matching fabric approximately 5 inches square
- A button that matches your fabric
- A circular jar or other item to create a circle on your fabric
- A pair of scissors
- Straight pins
- Sewing needles and thread
- Matching floss
- A pencil
- Fiber fill
- Glue gun

1. Trace circles on the wrong sides of the two pieces of fabric. Cut fabric along pencil lines to create two circles.
2. Position the fabric right sides together and pin together.
3. Sew the circles by hand leaving a 1-inch opening.
4. Turn the circle to right side.
5. Stuff the circle with fiber fill until it looks plump.
6. Sew the opening closed.



7. Using matching embroidery floss, sew lines from the back center around to the back drawing the floss through the center. Repeat this spacing the lines as in the photo of the pincushion in the photo.
8. End with a knot on the back of the pin cushion.
9. Attach the button on the center of the pin cushion using a glue gun.

~ Madi Appell



the quilt tree

10% off total purchase
with this ad

thequilttree.com	sunday	12-6
	monday	closed
845.353.1501	tuesday	10-6
	wednesday	10-6
Quilting on the Hudson	thursday	10-6
9 South Broadway	friday	10-6
Nyack, New York 10960	saturday	10-6

Authorized Bernina Dealer

NOW CARRYING DOLL CLOTHING SUPPLIES



SEW BEARY SPECIAL
718-951-3973
1025 EAST 28 STREET
BROOKLYN, NY 11210
sewbeary@aol.com
A SHOPPE FOR QUILTERS

"Where I'm always happy to show you how to do it easier, faster and more fun way."

Cotton Fabrics, Books, Rotary Tools & Templates
Digital Longarm Quilting Services

Sewing & Quilting Classes Available

Guild Discount Honored

Marcie Brenner, Owner

Open by Appointment

Master Certified Sewing Educator



YANKEE QUILTER

5 Klarides Village Drive
Seymour, CT, 06483
(203) 888-9196

www.yankeequilter.com

Husqvarna

VIKING®



Easy Piecing

www.easypiecing.com
open by appointment only

Sashiko Supplies
Ribbon
Japanese Fabric
Silk Fabric
Shweshwe Fabric
Pre-cut Kits

easypiecing@gmail.com

CHARITY QUILT SIZES

ABC Quilts — No less than 32 inches or more than 44 inches. Use colorful fabrics, no beading or buttons.

Halo Quilts — From 48 by 60 inches to twin size. No religious or law enforcement themes. No hand-tied; machine quilting preferred.

Hole in the Wall — 40 by 40-inch lap quilts preferred, up to twin size.

Comfort Quilts — Queen/Full should measure 84 x 94 inches; twin, 64 x 84. Twin preferred.

Soldier Quilts — No smaller than 50 by 60 inches; no larger than 72 by 90 inches. Add a signed and dated label thanking the wounded soldiers.

Labor of Love (HOPS) — No smaller than 50 by 50 inches; no larger than 80 by 80 inches. Made in red, white and blue fabrics.

artBrooklyn
DANIEL McDONALD

color theory class for quilters
instructor DANIEL McDONALD

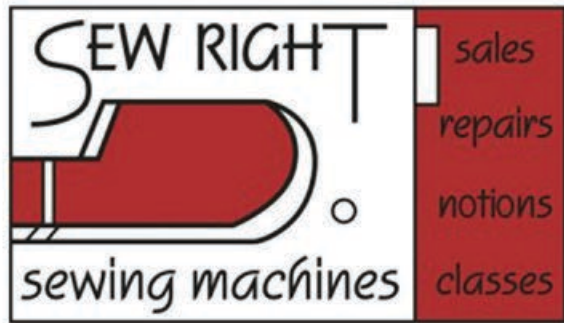
artbrooklyn.danielmcdonald@gmail.com



Crafting on
the Plaza
with M & M

Marla DiForte &
Maryann Loiacono

40 Hillview Place
Staten Island NY 10304
718-501-7402; 917-208-1910
jellylady123@aol.com
www.craftingontheplaza.com



Experience the difference.

We love to sew and share!

Visit us for the best in....

Service

Warm and friendly assistance is always available!
We pride ourselves on years of expert knowledge and helpful advice.

Maintenance

We service sewing machines, embroidery machines, sergers, and overlockers.

Selection

We offer the broadest selection of machines. Come in at any time to test drive your next machine! We also carry a wide range of fabrics, patterns, and notions.

Classes

We have classes for all levels and interests!
Beginner or advanced sewists. Teens and adults. Quilts, garments, and accessories.
All are welcome!



223-20 Union Turnpike
Bayside, NY 11364



www.sewright.com
718.468.5858



LOVE IS IN THE MAKING



Materials, Classes and Machines for the Inspired Maker

Store Hours : Mon – Fri 12 – 7, Sat 12 – 6, Sun 12 – 5

128 Union Street, Brooklyn, New York 11231 • www.brooklyngeneral.com



The Brooklyn Bee

The Brooklyn Quilters Guild

P.O. Box 150198, Van Brunt Station
Brooklyn, NY 11215-0198

www.quiltbrooklyn.org