

Holiday Dinner Table Runners 2020
 Finished Quilt: 18" x 48"

Designed by Barb Christ
 Finished Block: 6"

As our family can't be together for the holidays, I made table runners for each of our households. We are hoping to cook the same meal, set a virtual table, and enjoy each other's company while zooming on New Year's Day.

The focus fabric for the first group of runners was made using a photographic printing process developed in the mid-19th century called cyanotype. For directions on how to use the pretreated fabric sheets, see sources. Although I used ferns from my garden, (photo 1), anything that lies flat and casts a shadow will produce an image. It might be fun to ask friends or family to cut out paper snowflakes and use these for printing instead. For the my runner (photo 2), I used an assortment of Japanese fabrics, some of which I'd purchased from guild member Susan Sato at <https://www.easypiecing.com> . Charm packs also work well.

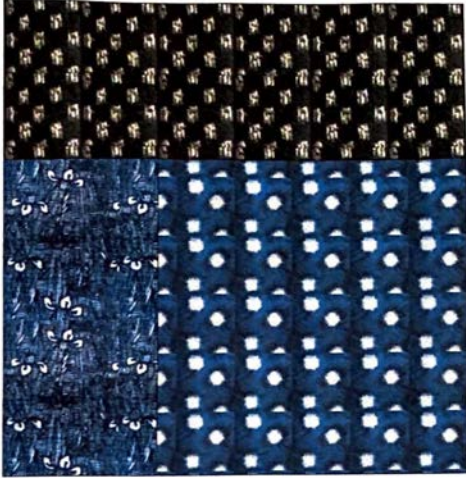
FABRIC REQUIREMENTS

			Photo 1	Photo 2
Fabric A used in both blocks	3/8 yard	Cut 24 - 2 1/2" x 6 1/2" rectangles	Kasuri (ikat)	Mini fireflies
Fabric B Block A	1/4 yard	Cut 12 - 4 1/2" squares	Assorted prints bright indigo and whites	Kasuri (ikat)
Fabric C Block A	1/4 yard	Cut 12 - 2 1/2" x 4 1/2" rectangles	Dark indigo and white floral	Multi Colored Dragonflies
Fabric D Block B	1/4 yard	Cut 12 - 3" x 4 1/2" rectangles	Darkest geometric indigo and white print	Solid
Fabric E Block B	1/4 yard	Cut 12 - 2" x 4 1/2" rectangles	Mini fireflies	Multi colored calligraphy
Fabric F Block B	1/8 yard	Cut 12 - 2 1/2" squares	Blender or tone on tone	Rust floral
Fabric G Block B	1/8 yard	Cut 12 - 2 1/2" squares	Cyanotype or focus fabric	Multi Dragonflies
Backing	1 yard			
Binding	144"			

PIECING THE BLOCKS:

3 Course Meal - BLOCK A

Referring to diagram, sew the Fabric B - $4\frac{1}{2}$ " square to Fabric C - $2\frac{1}{2}$ " x $4\frac{1}{2}$ " rectangle. Join to Fabric A - $2\frac{1}{2}$ x $6\frac{1}{2}$ " to complete unit. The unit should be $6\frac{1}{2}$ " square including seam allowances. Repeat to make 12 blocks total.



5 Piece Place Setting - BLOCK B

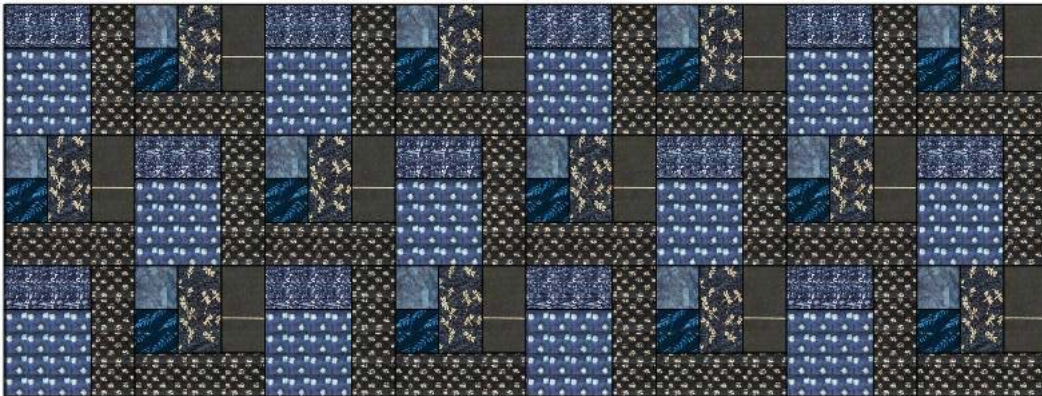
Referring to diagram, sew Fabric F - $2\frac{1}{2}$ " square to Fabric G - $2\frac{1}{2}$ " focus fabric square. Join to Fabric E - $4\frac{1}{2}$ x 2 " rectangle. Add Fabric D- 3 x $4\frac{1}{2}$ " rectangle. To complete block, join Fabric A- $6\frac{1}{2}$ x $2\frac{1}{2}$ " rectangle. Repeat to make 12 blocks total.



ASSEMBLING THE TABLE RUNNER

Referring to Table Runner diagram for block orientation, pair Block A and Block B and join. Repeat to make 4 pairs. Add Block A to right side to complete rows. Pair Block B and Block A and join. Repeat to make 4 pairs. Add Block B to right side to complete rows. Join rows.

Table Runner Diagram



FINISHING UP

Layer table runner top, batting and backing; baste.

Quilt as desired. Quilts shown were machine quilted using the #72 foot on a Bernina home machine and a clamshell ruler by Westalee.

Bind.

Sources: Jacquard Cotton Sateen Sheets

<https://www.jacquardproducts.com/cyanotype-fabric-sheets>

Cyanotype Pretreated Fabric Sheets 8 ½" x 11", two or three processed sheets are optimal to fussy cut 12 - 2 ½" squares.



Photo 1



Phot 2